

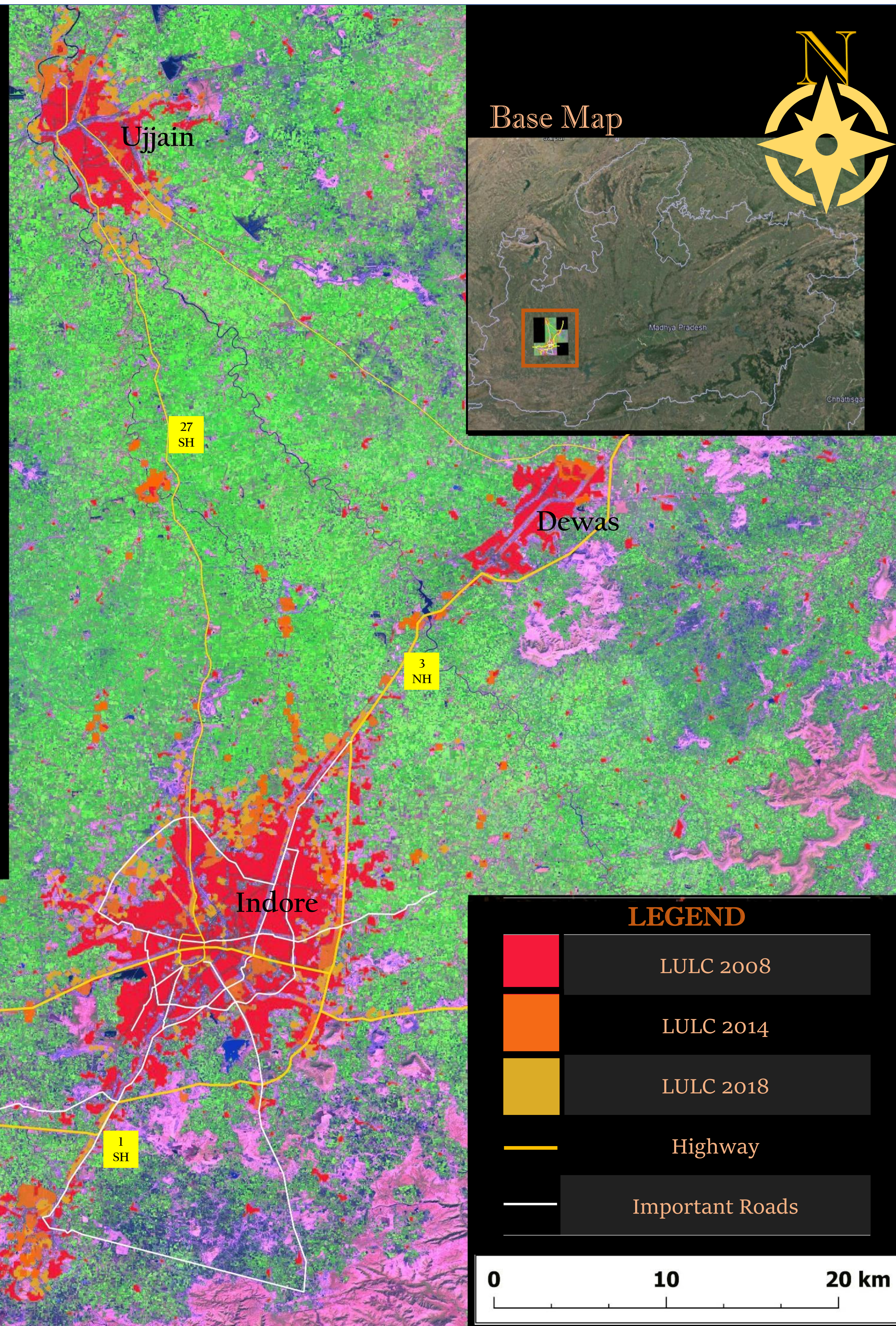
TITLE :

## Map of Indore, Ujjain region showing the urban growth in last decade. (2008\_2018)

- The region has shown a growth of 24% in terms of Built-up area.
- Most of the growth has been witnessed on small satellite settlements along the major transport corridors. (e.g. Mhow, Pithampur, Dewas)

Sources: Bhuvan LISS III imagery, LULC map

Tools : QGIS, PowerPoint, Google earth



### • Introduction

- Indore is the largest city in Madhya Pradesh with a population of over 3 lakhs.
- The city has seen a rapid growth in population due to rapid industrial activity and being the economic centre of the state.
- In the last decade alone the population has increased by almost 30%.

### • Why this topic

- Being an urban planner and a map enthusiast, I have observed a rapid expansion of built-up area in some of the urban centres like Indore, Bhubaneswar, etc.
- Here with given opportunities, I would like to show the extent of growth, the direction of growth and reasons of it.

### • Methodology

- The approach is to prepare a simple map that can demonstrate the urban growth of Indore and its adjacent settlements.
- I gathered a set of LISS III data for 4 tiles provided by Bhuvan. (2008- 2018)
- Merged those tiles and performed land use classification.
- Picked 3 intervals that are suitable for the study. i.e. 2008, 2014, 2018.
- Digitised the built-up marked area and presented under single image.

### • Conclusion

- As we can see here the development is carried out along the transport corridors mostly along the route connecting to the adjacent city/town.
- These maps can help us in prediction of future growth, housing demand at any location etc.

Name	Amit K. Biswal
Topic	LULC Change mapping
Profession	Masters in Urban Planning Student (MANIT, Bhopal)
Contact- +91-7008533101	
Email- chiku.amit.ab@gmail.com	